

# RULMECA GROUP

## MOTORIZED PULLEY

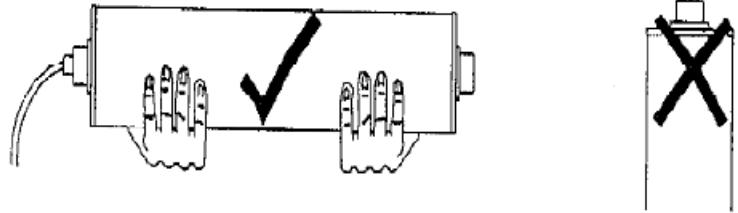
Installation & Connection manual



# 1. Installation instructions

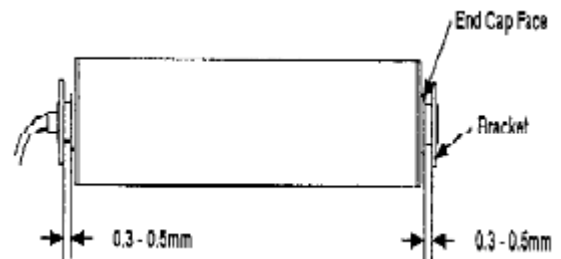
## 1.1 Handling

Handle with care. **DO NOT** lift the Motorized pulley by the cable.

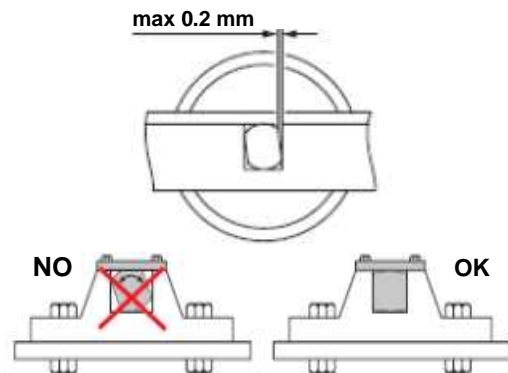


## 1.2 Mounting

Allow for a small gap (max 0.5 mm) between the end-caps slots face and the brackets as shown in figure.



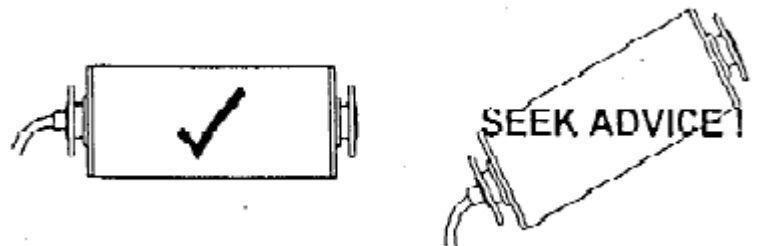
The Motorized Pulley supports bracket grooves must be well aligned and both parallel, allowing for a max gap of the shaft/end-caps slots of max 0.2 mm.



In case of many start-stops, this gap must be null, otherwise the gearbox is stressed and can be early damaged.

## 1.3 Inclination

LP Motorized Pulley should normally be mounted horizontally. Any deviation from this, needs technical advice from Rulmecca.



## 1.4 Belt tension

The belt should be tensioned just sufficiently to pull the belt and load without slip. Excessive belt tension can cause damage to the Motorized pulley.

## 1.5 Heat

LP Motorized Pulley **MUST NOT** be run without a belt or other form of approved heat transfer system. Heat generated by the Motorized Pulley must be dissipated, otherwise irreversible damage may occur to the transmission system.

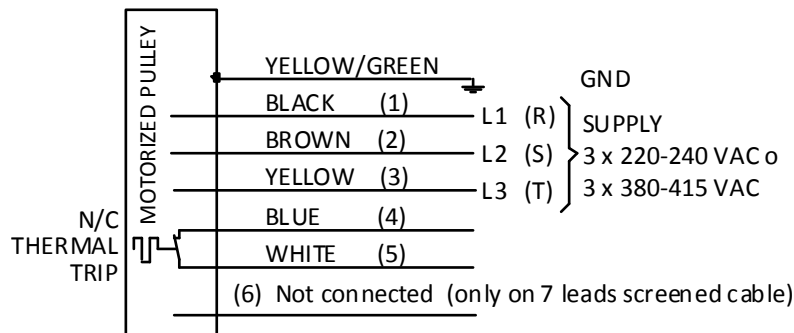
## 2. Connection Diagrams



### 2.1 Three phase

#### 3 phase, single voltage

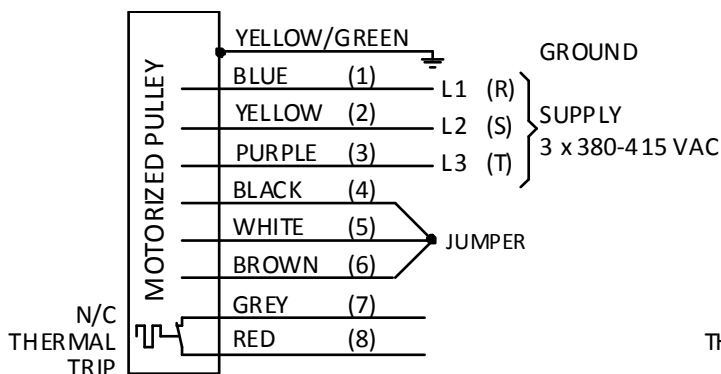
(cable at 6 leads, coloured or numbered; screened cable at 7 leads, numbered)



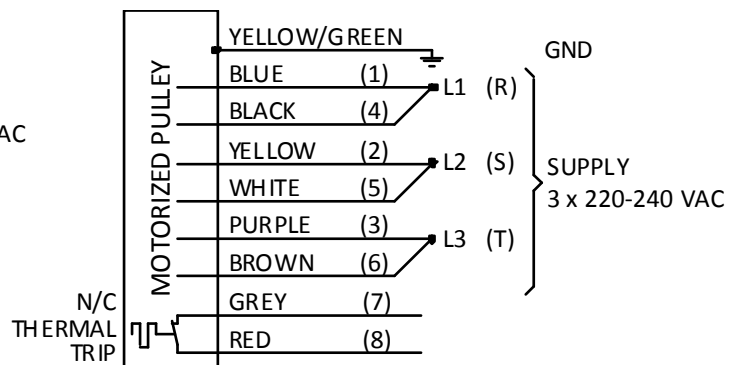
#### 3 phase, dual voltage (cable at 9 leads, coloured or numbered)

(Delta -Star possible connections)

##### Star (High voltage)

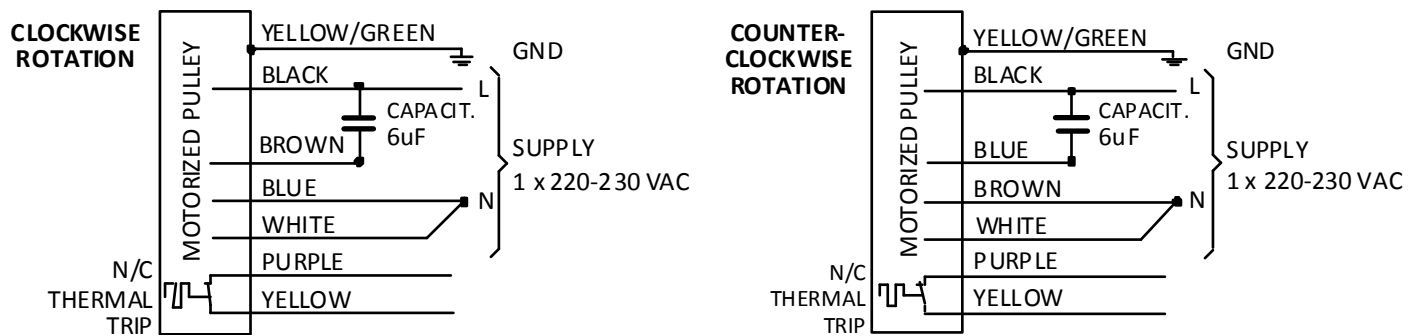


##### Delta (Low voltage)



- The screened cables (for use with Frequency converter) get black leads numbered, as per the above diagrams, apart the yellow/green ground lead.
- for all 3 phase motors, to reverse rotation interchange one pair of supply leads.
- Thermal protection contact fitted inside the motor windings (Normally Closed thermal contact, opening at rising temperature, dangerous for the windings. Automatically closing at temperature coming down. To be put in series to the emergency stop button).

## 2.2 Single phase



- Rotation direction is determined from the cable side view  
To reverse rotation, interchange BROWN with BLUE leads
- Thermal protection contact fitted inside the motor windings  
(Normally Closed thermal contact, opening at rising temperature, dangerous for the windings. Automatically closing at temperature coming down. To be put in series to the emergency stop button).

### WARRANTY

- Rulmeca provides 2 years guarantee on the Motorized pulleys LP, from the delivery date, against defects of materials and/or manufacture.
- The defective Motorized pulleys, will be repaired or replaced under warranty if returned to the Rulmeca Sister Company (where they were ordered), within the guarantee period.
- This warranty is void in the cases of: excessive belt tension, overloading, incorrect mounting, not respect of the above assembly instructions, thermal protection contact not connected (where present), electrical connection not in accordance with the wiring diagram here above.
- We remember that all motorized pulleys must be connected to the supply net, by a thermal over-current relay, even if equipped with the internal thermal protection contact.
- The wear of the shell and rubber lagging due to normal work, is not covered by warranty.



#### **Rulmeca Holding S.p.A.**

Via A. Toscanini 1,  
24011 ALME' (Bergamo) – ITALY  
Tel. +39.035.4300111 Fax. +39.035.545700  
E-mail: [rulmeca@rulmeca.it](mailto:rulmeca@rulmeca.it)  
web: [www.rulmeca.it](http://www.rulmeca.it) - [www.rulmeca.com](http://www.rulmeca.com)