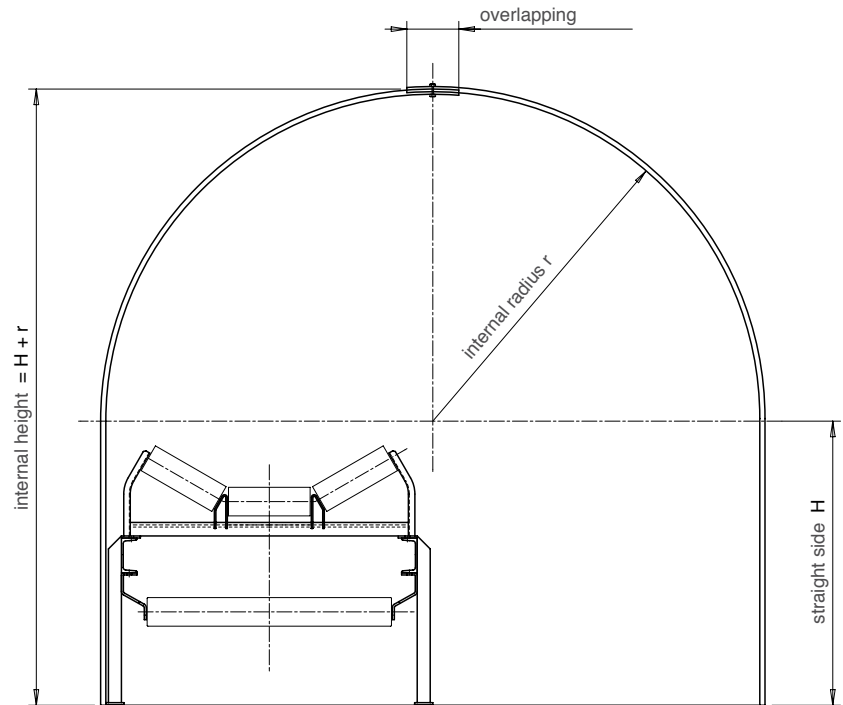


## 6 Covers

### 6.3.9 CPTA 4 “Walkway”



Covers are supplied in 2 pieces.  
Standard pitch.  
Maximum radius 1750 mm.

#### Dimensions on request:

When you send us your enquiry, please supply the following details:

- opening  $2 R$
- straight side  $H$
- lay-out for ground positioning
- lay-out for “suspended” positioning (in this case please specify the framework section)
- environmental conditions and wind max. force

NOTE: The fixing brackets for sheet steel covers (on the ground or fixed to the framework) are not part of our supply but we can suggest to you their shape (in any case we will provide the fixing dimensions).

