

# 113LS - 220H CONNECTION DIAGRAMS

## Connection diagrams for drum motor Terminal box with WAGO clamp 113LS - 220H (ELB only single voltage)

Characters in brackets for 2 stage gearbox  
turning direction clockwise.

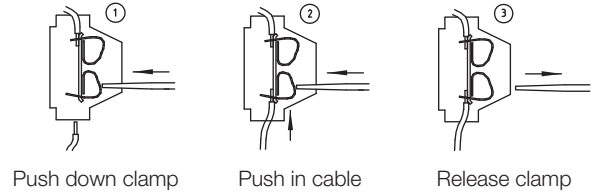
TP - Thermal protector T1 & T2

ELB - Electromagnetic brake B1 & B2

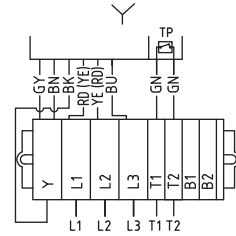
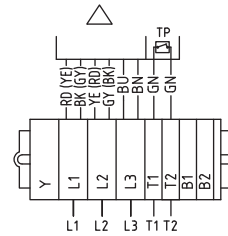
### Color code

- RD - Red
- YE - Yellow
- BK - Black
- GY - Grey
- BU - Blue
- GN - Green
- WH - White
- BN - Brown

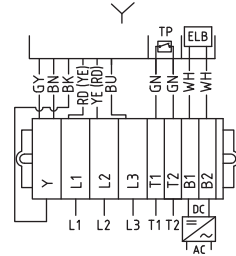
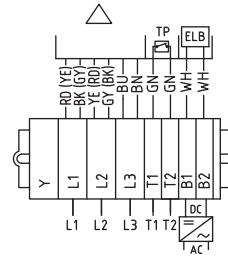
### Assembly instruction



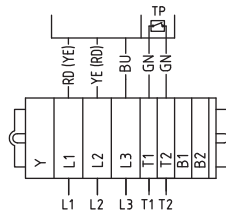
3-Ph motor  
dual voltage  
with TP



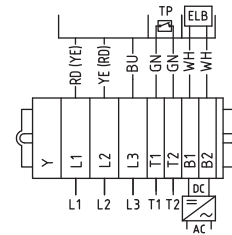
3-Ph motor  
dual voltage  
with TP & ELB



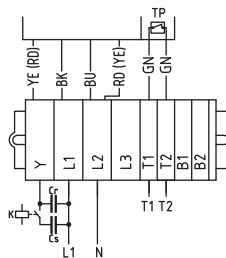
3-Ph motor  
single voltage  
with TP



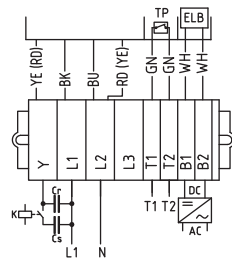
3-Ph motor  
single voltage  
with TP & ELB



1-Ph motor  
with TP



1-Ph motor  
with TP & ELB



Cr - Run capacitor  
Cs - Start capacitor

Cr - Run capacitor  
Cs - Start capacitor

# 220M - 220H CONNECTION DIAGRAMS

## Connection diagrams for drum motor Cable connection 220M - 220H

Lead numbers for turning direction  
clockwise.

TP - Thermal protector T1 & T2

ELB - Electromagnetic brake

### Color code

GN - Green

YE - Yellow

