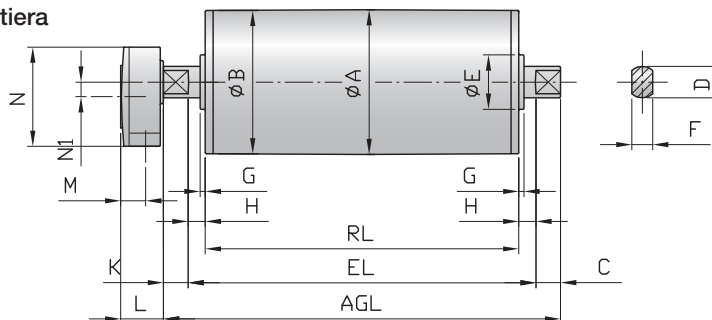
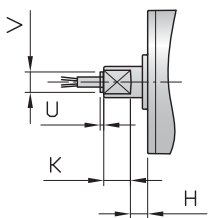


# Mototamburo 165E, Ø 165 mm

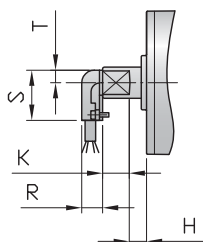
Mototamburo con morsetteria



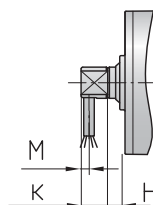
Mototamburo con cavo dritto



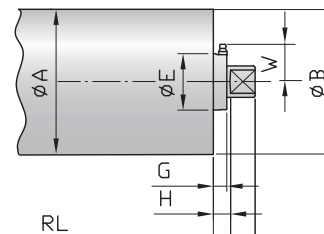
Cavo ad angolo



Asse con uscita cavo



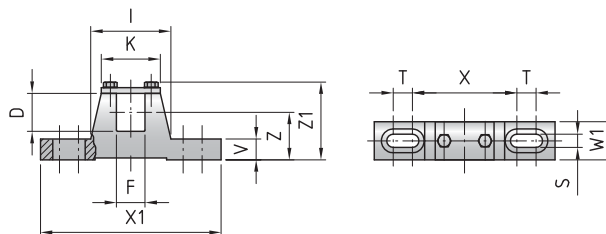
Tamburo folle in acciaio inox



**Misure standard**

Tipo / Opzione	Rif.	A mm	B mm	C mm	D mm	E mm	F mm	G mm	H mm	K mm	W mm	L mm	M mm	N mm	N1 mm	U mm	V mm	R mm	S mm	T mm	
165E (UT165E) / Morsetteria		165	163.5	43.5	40	80	30	10	21.5	41.5	48	41	24	95	14						
Versione in acciaio inox (con tenute reingrassabili)						64.5		13.5	21.5							4	27				
Cavo dritto									21.5	43.5						4	27				
Cavo ad angolo									21.5	43.5								20	48	12	
Asse con uscita cavo										43.5			8-11								

Supporti KL40



Mototamburo	Supporto	Materiale	Dimensioni												Peso
			D mm	F mm	I mm	K mm	S mm	T mm	V mm	W1 mm	X mm	X1 mm	Z mm	Z1 mm	
165E	KL40	Acciaio	40	30	84	62	14	20	22	40	110	190	50	83	2.1