

2 Rollers

series

Self cleaning



2.6.4 - Return rollers with helical steel cage for self cleaning

Used in the return section to support the belt when the conveyed material is very adhesive, as with for example clay.

They may be positioned on any part of the conveyor return section, when it is relatively short.

When these rollers are produced with a spiral steel cage, it is attached to the two end caps with similar characteristics to the PSV rollers series.

The spiral cage, in permanent contact with the dirty side of the belt, removes material from the belt using its natural rotary cleaning action.

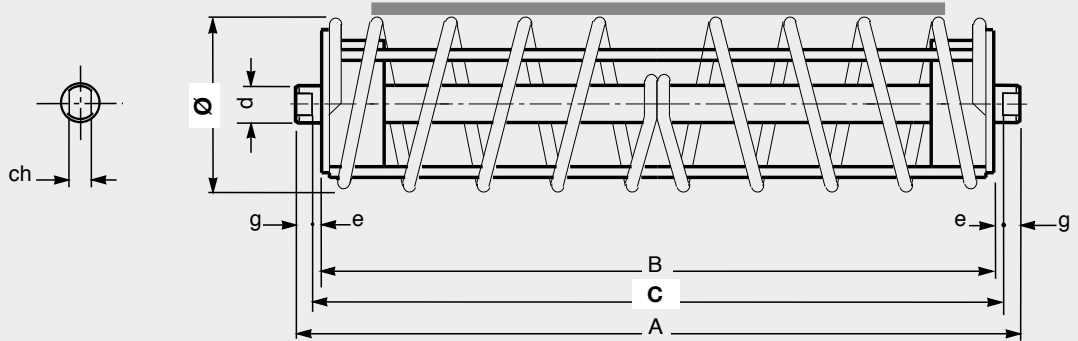
The rollers should be installed in a way that the spiral moves the material towards the edge of the belt.

These rollers must not be employed as belt snub rollers.

The tables indicate the standard types and diameters with their dimensions according to European norms. On customer request cleaning rollers may be supplied with spirals in steel, with non standard dimensions and characteristics (for example steel spiral in flattened format).

Program

base roller type	Ø mm	standard design	spindle		bearing
			d	ch	
PSV 91	108	S	20	14	6204
	133	S			
PSV 92	133	S	25	18	6205
PSV 94	133	S	30	22	6206
RTL 1	60	NS	15	17	6202
	76	NS			
MPS 1, MPR 15	60	NS	15	17	6202
	76	NS			



Ø 108 S 133 S

Base roller:

PSV 91


D = 108, 133
spindle 20
bearing 6204
ch = 14
e = 4
g = 9

PSV 94

D = 133
spindle 30
bearing 6206
ch = 22
e = 4
g = 12

PSV 92

D = 133
spindle 25
bearing 6205
ch = 18
e = 4
g = 12

belt width mm	roller dimensions mm			weight Kg		
	arrangement 	B	C	A	Ø 108	Ø 133
300		380	388	406	6.0	9.8
400		500	508	526	6.8	10.5
500		600	608	626	7.5	11.3
650		750	758	776	8.5	12.5
800		950	958	976	9.9	14.1
1000		1150	1158	1176	11.3	15.7

Example of ordering
standard design
PSV91,20F,108S,758

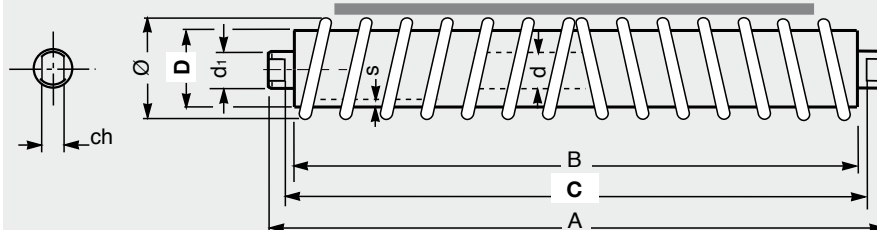
for special designs
see pages 80-81





2 Rollers

series Self cleaning



60 NS 76 NS

Base roller:

MPS 1

s = 3;
spindle 15; d₁ = 20
bearing 6202
ch = 17

RTL 1

s = 2;
spindle 15; d₁ = 20
bearing 6202
ch = 17

MPR 15

s = 3;
spindle 15; d₁ = 20
bearing 6202
ch = 17

belt	roller D 60 Ø 76			weight Kg		
width mm	dimensions mm			weight Kg		
arrangement	B	C	A	RTL	MPR	MPS
300	380	388	406	2.5	3.1	3.2
400	500	508	526	3.3	4.1	4.1
500	600	608	626	3.9	4.8	4.8
650	750	758	776	4.8	5.9	5.9
800	950	958	976	6.0	7.3	7.4
1000	1150	1158	1176	7.2	8.8	8.9

belt	roller D 76 Ø 92			weight Kg		
width mm	dimensions mm			weight Kg		
arrangement	B	C	A	RTL	MPR	MPS
300	380	388	406	3.1	3.9	3.9
400	500	508	526	4.1	5.1	5.1
500	600	608	626	4.7	5.9	5.9
650	750	758	776	5.8	7.3	7.3
800	950	958	976	7.2	9.0	9.0
1000	1150	1158	1176	8.8	10.9	10.9

Example of ordering
standard design
MPS1,15 B, 60 NS ,758

for special designs
see pages 80-81